

[dave3825](#) replied to a thread you are watching at [RadioReference.com Forums](#).

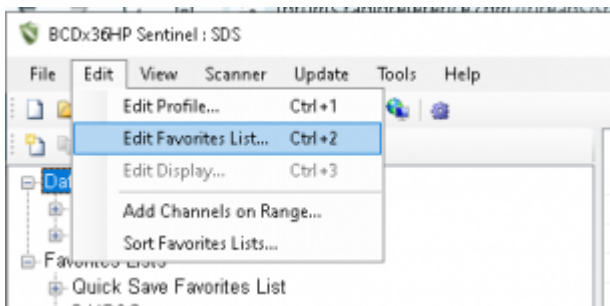
SDS-200 programming . . . is there a way to add a list of frequencies to a favorites list?

KB2GOM said:

When I create a new favorites list, I don't any way to manually type new frequencies into it.

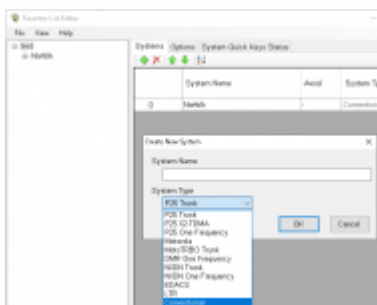
What am I missing?

First, read you scanner into Sentiunel. The locate the list you want to add to.

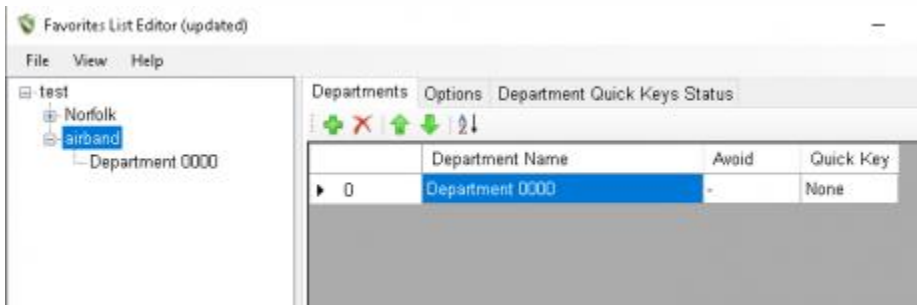


Then either open a system to add to or create a new system (conventional)

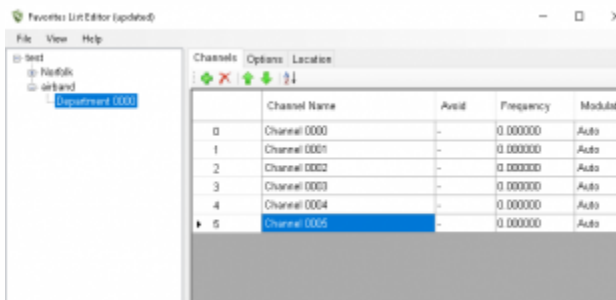
When the new window opens, click green plus sign.



Then in there, green plus sign again and add a department



Then click on the new department, and then green plus for the number of freqs you want to add



When all done, add any text, tags, service types, and or quick keys and save, then write to scanner.

[View this thread](#)

[Watched threads](#)

Please do not reply to this message. You must visit the forum to reply.

This message was sent to you because you opted to watch the thread [SDS-200 programming . . . is there a way to add a list of frequencies to a favorites list?](#) at RadioReference.com Forums with email notification of new replies. You will not receive any further emails about this thread until you have read the new messages.

If you no longer wish to receive these emails, you may [disable emails from this thread](#) or [disable all emails](#).

[Visit RadioReference.com Forums](#)